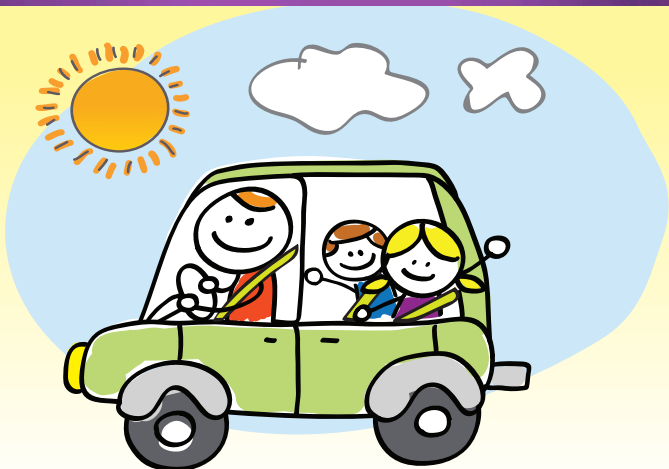


# Child Safety Seat Program



Car seats are designed to keep kids as safe as possible, but it's up to every parent or responsible caregiver to make sure they have chosen, and are installing and using each car seat correctly. Memorial Children's Hospital, Leighton Trauma Center and The South Bend Fire Department offer certified staff, Child Passenger Safety Technicians, which will teach you to correctly install and use your child safety seats according to safety guidelines and the law.

Technicians are available to check your seats and give you the peace of mind that you have already installed it correctly or be able to offer suggestions to show you how you can improve the safe vehicle travel of your infant or child.

Car seats are available and are distributed when the technician makes a recommendation. A financial donation will be requested based on financial need. Seats are not given away for free.

**For more information or to make an appointment, call 574.647.1804 (press 1).**

**Para las personas que hablan español, por favor llame a los interpretes al 574.647.6796.**



MemorialChildrensHospital.org



LEIGHTON TRAUMA CENTER  
QualityOfLife.org



South Bend Fire Department  
SouthBendIN.gov

The 'best' seat is one that fits your child's height, weight, age, and developmental needs and one that the parent or caregiver will use correctly every time on every ride.

## Why do I need a certified child passenger safety technician to check my child's car seat?



At the Car Seat Checkup the technician will inspect the car seat for recalls, expiration, and current use. They will educate you on the *safest* way to transport your child in the vehicle using the following criteria.

**Right Seat** for the child considering the age and growth of your child.

**Right Position** to install the car seat in the vehicle considering all the other passengers.

**Right Direction** your child should be facing in the vehicle.

**Right Installation Tightness** using either the vehicle safety belt or latch.

**Right Harness or Belt tightness** used to safely secure the child in the seat.

